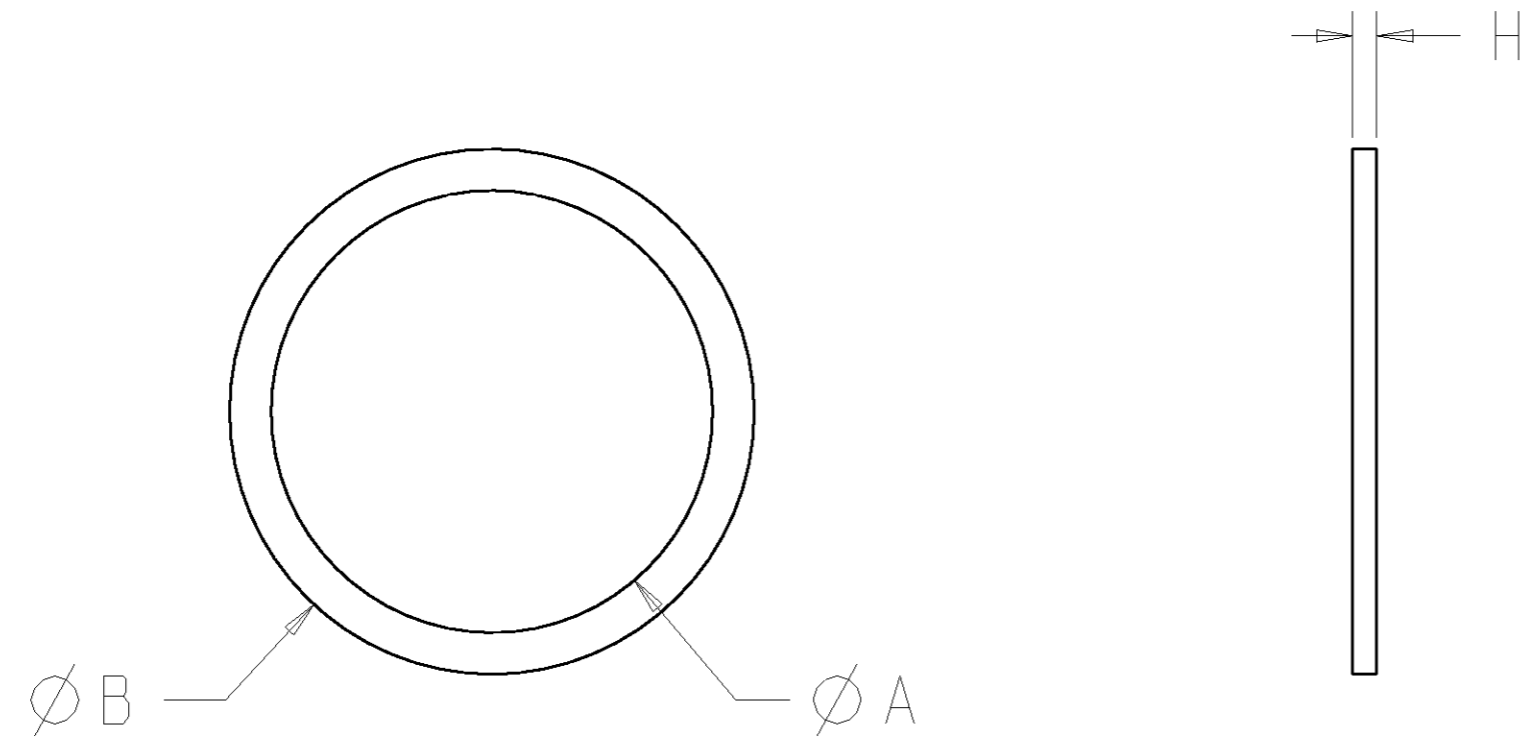


THIS DRAWING IS UNPUBLISHED. RELEASED FOR PUBLICATION  
 © COPYRIGHT 19 BY AMP INCORPORATED. ALL RIGHTS RESERVED.

| LOC | DIST | REVISIONS |     |                             |           |     |      |
|-----|------|-----------|-----|-----------------------------|-----------|-----|------|
| FT  | 0    | P         | LTR | DESCRIPTION                 | DATE      | DWN | APVD |
|     |      |           | O   | RLSE PER NPR 5738           | -         | -   | -    |
|     |      |           | A   | REVISED PER EC 063B-0074-99 | 27-DEC-99 | LM  | MC   |



SUPERCEDED by 796258-6

|                        |                |        |         |         |           |        |        |             |
|------------------------|----------------|--------|---------|---------|-----------|--------|--------|-------------|
| 0.420                  | 10             | 3.2    | 66      | 60.5    | 2"        | G54    | 2"     | 796255-8    |
| 0.270                  | 25             | 2.7    | 55      | 48.5    | 1 1/2"    | -      | 1 1/2" | 796255-7    |
| 0.240                  | 25             | 2.7    | 51      | 42.5    | 1 1/4"    | G36    | 1 1/4" | 796255-6    |
| 0.190                  | 25             | 2.2    | 43      | 34      | 1"        | G28    | 1"     | 796255-5    |
| 0.130                  | 25             | 2.2    | 34      | 27.5    | 3/4"      | G22    | 3/4"   | 796255-4    |
| 0.080                  | 50             | 1.8    | 27      | 21.5    | 1/2"      | G16    | 1/2"   | 796255-3    |
| 0.060                  | 50             | 1.8    | 23      | 18      | 3/8"      | -      | 3/8"   | 796255-2    |
| 0.030                  | 50             | 1.6    | 17      | 14      | 1/4"      | -      | 1/4"   | 796255-1    |
| Approx. Weight kg/100p | Packaging Unit | H      | B       | A       | Whitworth | CTG    | NPT    | Part Number |
|                        |                | Height | Outer-Ø | Inner-Ø | Thread    | Thread | Thread |             |

THIS DRAWING IS A CONTROLLED DOCUMENT FOR AMP INCORPORATED. IT IS SUBJECT TO CHANGE AND THE CONTROLLING ENGINEERING ORGANIZATION SHOULD BE CONTACTED FOR THE LATEST REVISION.

|                  |                           |         |   |
|------------------|---------------------------|---------|---|
| DWN              | S. WELDON                 | 26MAY99 | AMP Incorporated<br>Harrisburg, PA 17105-3608 |
| CHK              | D. BIEVENOUR              | 26MAY99 |   |
| APVD             | D. BIEVENOUR              | 26MAY99 |   |
| NAME             | FLAT SEAL, CONNECTOR BODY |         |   |
| PRODUCT SPEC     | -                         |         | RESTRICTED TO                                 |
| APPLICATION SPEC | -                         |         | SIZE  |
| WEIGHT           | -                         |         | A2  |
| CUSTOMER DRAWING | SCALE                     |         | NTS   |
| SHEET            |                           | 1       | OF  |
| REV              |                           | A       |   |